



GG ENVIRONMENTAL, LLC

Eastern
Washington
Region

PROFESSIONAL EXPERIENCE:

- 28-year career as a professional biologist.
- 15 years as an independent consultant.
- Tenures in field research, two state transportation agencies, and commercial consulting firm.
- Over 190 wetlands delineated and 38 wetland mitigation or riparian restoration sites managed.
- 600+ projects evaluated under the Endangered Species Act, with over 125 federal ESA Section 7 consultations.
- 28 years of professional-level GPS/GIS survey and mapping.

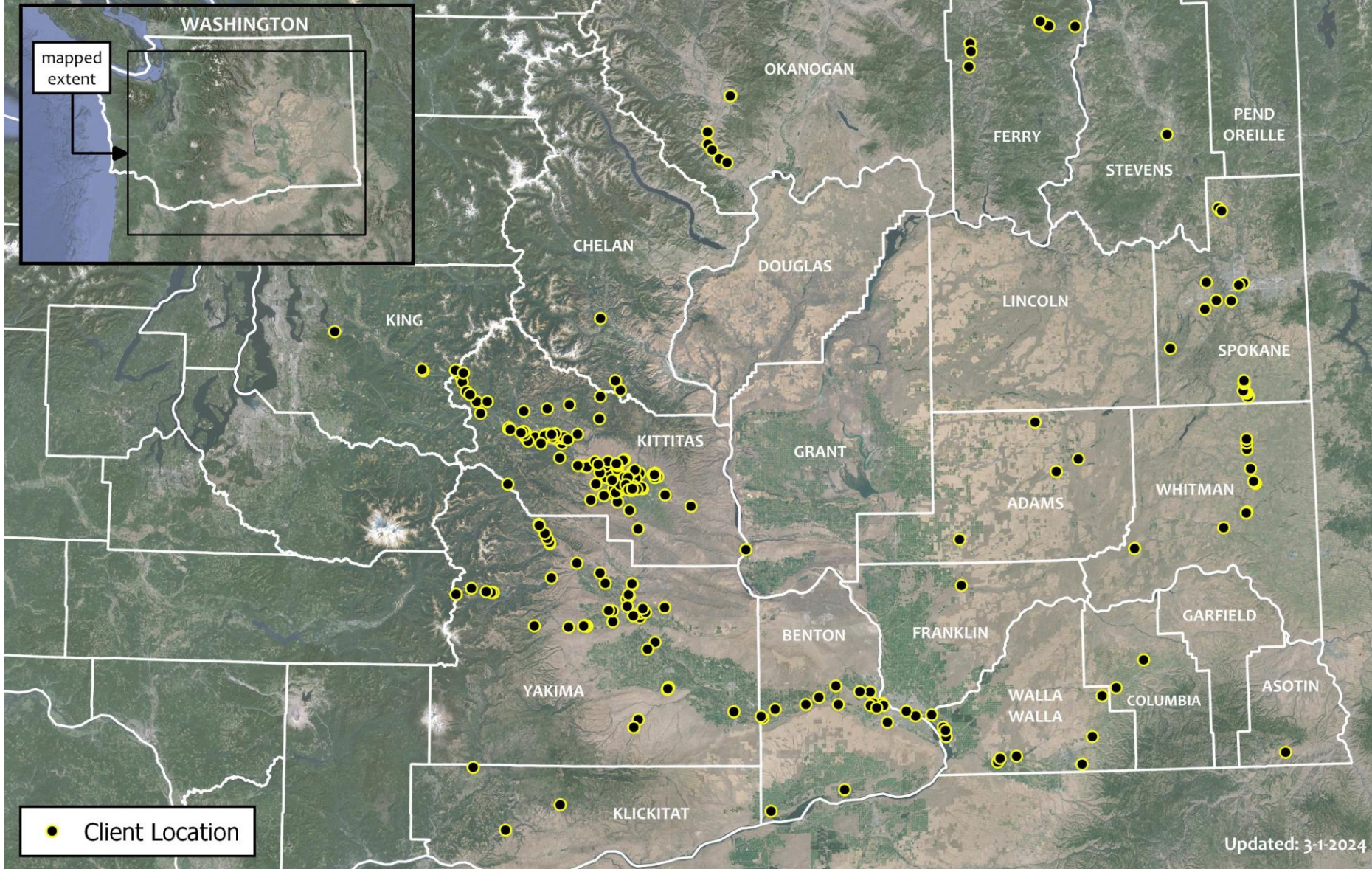


GEOFFREY GRAY, MA, PWS

SERVICES OFFERED:

- Site reconnaissance and risk analysis.
- Wetland delineation, rating, mitigation, monitoring, and management.
- Stream and riparian assessment, OHWM delineation.
- Biological assessment reports, ESA consultation, MBTA/BGEPA compliance.
- Critical Areas, Shorelines, and JARPA support.
- Wildlife/habitat surveys and monitoring.
- GPS surveys and GIS mapping.

151 Poulin Rd. Selah, WA 98942 | 509.426.5645 mobile/text | gg@gg-env.com | www.gg-env.com | Fully insured




PROFESSIONAL FOOTPRINT
Eastern Washington

Geoffrey Gray, MA, PWS
GG Environmental, LLC

0 25 mi

Direct questions regarding this map to:
Geoffrey Gray, MA, PWS
509-426-5645 mobile | gg@gg-env.com



GG Environmental, LLC
WETLANDS • FISH • WILDLIFE



GG Environmental, LLC

WETLANDS • FISH • WILDLIFE

Twenty-eight years on the job. Hundreds of projects delivered. Established professional relationships. Honed skill sets. Cutting-edge technology. A proven track record.

One consultant in charge of your project from beginning to end.

Reachable. Responsive. Rapid. Reasonable. That's what to expect from Geoffrey Gray (GG).

GEOFFREY GRAY, MA, PWS

151 Poulin Rd. Selah, WA 98942 / 509.426.5645 / gg@gg-env.com / gg-env.com